

WarmRain Specification for models:
FW 436 (WHEDA B Shower)



Warm Rain® model FW-436 Friendly® showers fixture are constructed of reinforced polyester resin covered with a high gloss gel-coat of 18 - 20 mils. thickness. The reinforced fiberglass has a minimum content of 18 % fiberglass.

The base is an integral part of the unit.

The unit will measure 48" x 39" x 79" and have an inside dimension of 45" x 36".

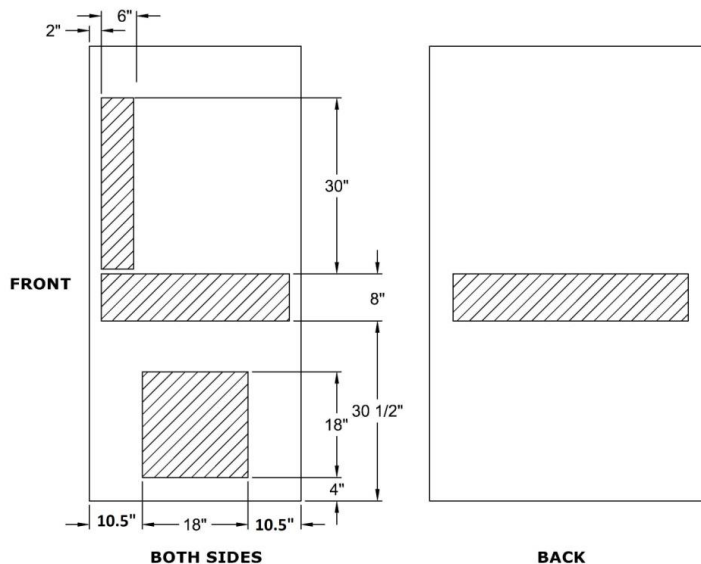
The bottom floor is textured. The texture bottom floor meets and exceeds ASTM Safety Specification F-462.

The Front Outside threshold is 3".

These units have flat walls and are reinforced for the future installation of grab bars. The reinforcement is shown in the diagram below. See page 2 for options including grab bars & fold-up seat.

These Warm Rain® assisted showers arrive on site fully tested, inspected, and certified to meet or exceed the precise standards established by FHA/HUD, materials bulletin 73, American National Standards Z-124.1 and Z-124.2, ASTM/E-84 and is certified by the National Association of Home Builders NAHB). **These Adaptable units comply with the Fair Housing Act for Adaptability and Wisconsin WHEDA B**

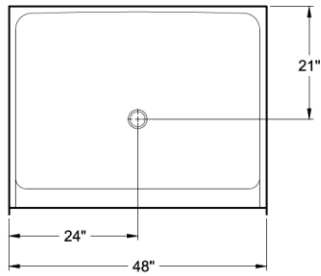
WHEDA B - FW 436



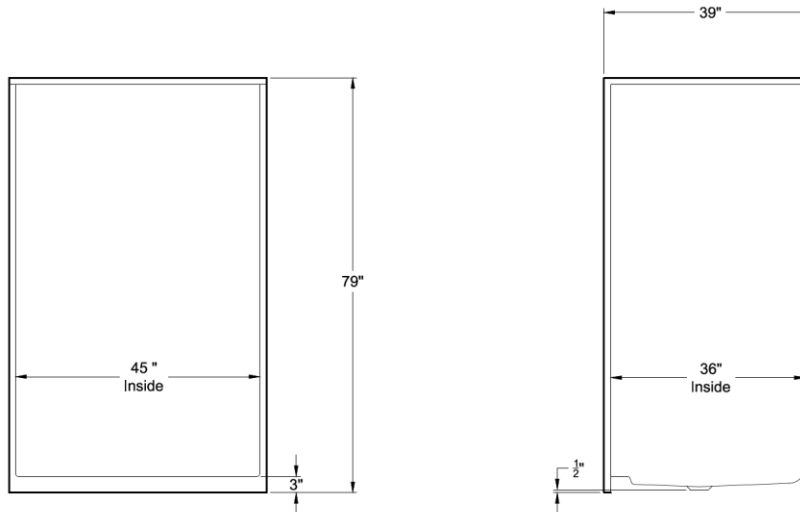
Warm Rain Corporation, P.O. Box 600, Hancock, MI 49930

Voice: 906-482-3750 Fax: 906-482-2585 email: tedk@warmrain.com website: www.warmrain.com

WarmRain Specification for models:
FW 436 (WHEDA B Shower)



FW 436



2-8-13



FW-436-A: Model includes Grab Bars

The grab bars will be factory installed. The grab bars will be 1 1/2” outside diameter ADA compliant stainless steel bars. There are 1-36” and 2-24” horizontal grab bars and 1-24” vertical grab bar. The wall reinforcement is wood fibreglassed into the unit. 1 - 24” bar will be placed on both the wet wall and the dry wall 34.5” above the floor. 1 - 36” grab bar will be placed on the back wall 34.5” above the floor. 1 - 24” vertical grab bar will be placed 4” above the horizontal bar and 4” from the front of the shower.

FW-436-B: Model includes Grab Bars & a Fold-up seat

The grab bars will be factory installed. The grab bars will be 1 1/2” outside diameter ADA compliant stainless steel bars. There are 3-24” horizontal grab bars and 1-24” vertical grab bar. The wall reinforcement is wood fibreglassed into the unit. 1 - 24” bar will be placed on both the wet wall and the dry wall 34.5” above the floor. 1 - 24” grab bar will be placed on the back wall 34.5” above the floor. 1 - 24” vertical grab bar will be placed 4” above the horizontal bar and 4” from the front of the shower. The ADA compliant fold-up seat will be factory installed. The seat will support a minimum of 250 #’s. The seat will be placed on the side wall opposite the controls 18” above the floor. The seat shall be a phenolic white ADA compliant seat.

FW-436-C: Model includes Grab Bars, Fold-up seat, Pressure Balance Valve, Hand held shower with slide bar, Vacuum Breaker, & Curtain rod with brackets

The grab bars will be factory installed. The grab bars will be 1 1/2” outside diameter ADA compliant stainless steel bars. There are 3-24” horizontal grab bars and 1-24” vertical grab bar. The wall reinforcement is wood fibreglassed into the unit. 1 - 24” bar will be placed on both the wet wall and the dry wall 34.5” above the floor. 1 - 24” grab bar will be placed on the back wall 34.5” above the floor. 1 - 24” vertical grab bar will be placed 4” above the horizontal and 4” from the front of the shower. The ADA compliant fold-up seat will be factory installed. The seat will support a minimum of 250 #’s. The seat will be placed on the side wall opposite the controls 18” above the floor. The seat shall be a phenolic white ADA compliant seat. 1 - Symmons Allura Valve & Kit model # S-4700-300B-30-V-X will include an Allura S4700 pressure balance valve with integral service stops, hand held shower with a 30” bar, and a vacuum breaker. Also, 1 - Seachrome curtain rod with brackets will be included.



Warm Rain Corporation, P.O. Box 600, Hancock, MI 49930

Voice: 906-482-3750 Fax: 906-482-2585 email: tedk@warmrain.com website: www.warmrain.com