

Specifications for Models: WR 3636-MN, WR 3636-A-MN, WR 3636-B-MN,  
WR 3636-C-MN

Warm Rain® Models WR 3636-MN (1-piece) ADA compliant transfer shower fixture is constructed of reinforced polyester resin covered with a high gloss gel-coat of 18-20 mil. thickness. The reinforced fiberglass includes a minimum content of 18% fiberglass.

The bottom base of the unit is constructed of 1/2" end-grained balsa wood sandwiched between 2 layers of reinforced fiberglass at a content no less than 18%. The base is an integral part of the unit.

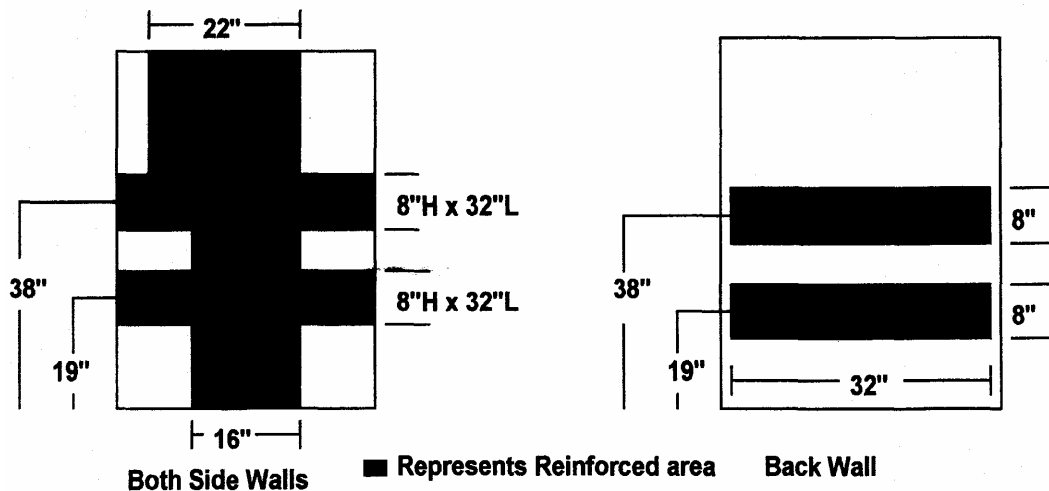
The unit will measure 40" L x 40 1/2" W x 77 1/2" H and has a textured bottom floor. The texture bottom floor meets and exceeds ASTM Safety Specification F-462.

The Front Outside threshold of this shower is only 3/4" of an inch.

These units are reinforced for the future installation of grab bars & a fold-up seat. This includes reinforcement for a vertical grab bar in accordance with the MN Building Code. The reinforcement is shown in the diagram below.

**Antibacterial additive is an option for this unit.**

These Warm Rain® ADA compliant Transfer showers arrive on site fully tested, inspected, and certified to meet or exceed the precise standards established by the FHA/HUD, materials bulletin 73), American National Standards Z- 124.1 and Z-124.2, ASTM/E-84, and is certified by the **NAHB** (National Association of Home Builders).



**(Over for Model Option Specifications)**

Warm Rain® Corp.  
P.O. Box 600 Hancock, MI 49930  
Phone: (906) 482-3750 Fax: (906) 482-2585 • E-mail: [tedk@warmrain.com](mailto:tedk@warmrain.com) • Website: [www.warmrain.com](http://www.warmrain.com)

Specifications for Models: WR 3636-MN, WR 3636-A-MN, WR 3636-B-MN,  
WR 3636-C-MN

**WR 3636-A-MN: Model includes Grab Bars**

The grab bars will be factory installed. The grab bars will be 1 1/2" outside diameter ADA compliant stainless steel bars. There are 3- 24" horizontal grab bars and 1-24" vertical grab bar. The wall reinforcement is wood fibreglassed into the unit. 1-24" grab bar on the wet wall will be placed 34.5" above the floor. 1-24" vertical grab bar will be placed 4" above the horizontal bar half way between the front of the unit and the middle of the wet wall. 1-24" grab bar on the back wall will be placed 34.5" above the floor. 1-24" grab bar will be placed opposite the wet wall at 34.5" above the floor.

**WR 3636-B-MN: Models includes Grab Bars & Fold-up Seat**

The grab bars will be factory installed. The grab bars will be 1 1/2" outside diameter ADA compliant stainless steel bars. There are 2- 24" horizontal grab bars and 1-24" vertical grab bar. The wall reinforcement is wood fibreglassed into the unit. 1-24" grab bar on the wet wall will be placed 34.5" above the floor. 1-24" vertical grab bar will be placed 4" above the horizontal bar half way between the front of the unit and the middle of the wet wall. 1-24" grab bar on the back wall will be placed 34.5" above the floor. The ADA compliant seat will be factory installed. The seat will support a minimum of 250 #'s. The seat will be placed on the side wall opposite the controls 18" above the floor & cover the full depth of the stall. The seat is a "L" shaped white phenolic ADA compliant seat.

**WR 3636-C-MN: Models includes Grab Bars, Fold-Up Seat, Pressure Balance Valve, Hand held Shower with Slide Bar, Vacuum Breaker, & Curtain Rod with Hangers**

The grab bars will be factory installed, the grab bars will be 1 1/2" outside diameter ADA compliant stainless steel bars. There are 2- 24" horizontal grab bars and 1-24" vertical grab bar . The wall reinforcement is wood fibreglassed into the unit. 1-24" grab bar on the wet wall will be placed 34.5" above the floor. 1-24" vertical grab bar will be placed 4" above the horizontal bar half way between the front of the unit and the middle of the wet wall. 1-24" grab bar on the back wall will be placed 34.5" above the floor. The ADA compliant seat will be factory installed. The seat will support a minimum of 250 #'s. The seat will be placed on the side wall opposite the controls 18" above the floor & cover the full depth of the stall. The seat is a "L" shaped white phenolic ADA compliant seat. 1- Symmons Temptrol Valve & Kit model # S-25-300-B30-V-X-2000 will include a Temptrol 2000 pressure balance valve, Hand held shower with 30" bar, Vacuum breaker. Also, 1-Seachrome 5' Curtain rod with hangers will be included with the unit.



Warm Rain<sup>®</sup> Corp.

P.O. Box 600 Hancock, MI 49930

Phone: (906) 482-3750 Fax: (906) 482-2585 • E-mail: [tedk@warmrain.com](mailto:tedk@warmrain.com) • Website: [www.warmrain.com](http://www.warmrain.com)