

Specifications for Models:

WR 3636, WR 3636-A, WR 3636-B, WR 3636-C

Warm Rain® models WR 3636 shower fixtures are constructed of reinforced polyester resin covered with a high gloss gel-coat of 18-20 mil. thickness. The reinforced fiberglass includes a minimum content of 18% fiberglass.

The bottom base of the unit is constructed of 1/2" end-grained balsa wood sandwiched between 2 layers of reinforced fiberglass at a content no less than 18%. The base is an integral part of the unit.

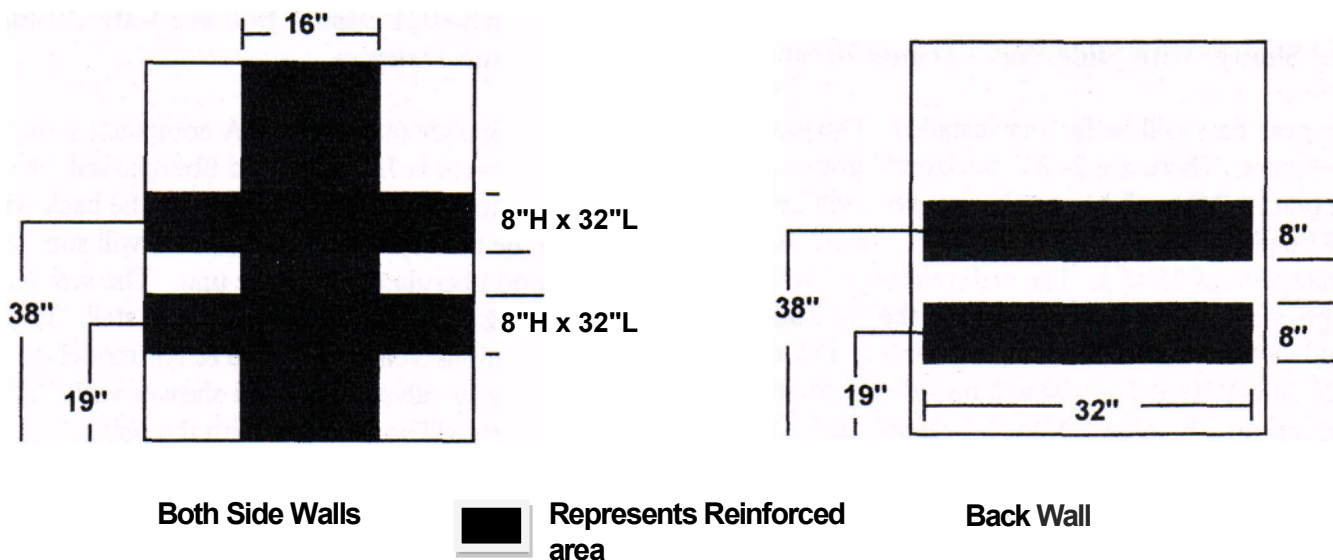
The unit will measure 40" L x 40 1/2" W x 77 1/2" H and has a textured bottom floor.

The front outside threshold is 3/4" of an inch.

These units are reinforced for the future installation of grab bars & a fold-up seat. The reinforcement is shown in the diagram below.

Antibacterial additive is an option for this unit.

These Warm Rain® Transfer showers arrive on site fully tested, inspected, and certified to meet or exceed the precise standards established by the FHA/HUD, materials bulletin 73), American National Standards Z-124.1 and Z-124.2, ASTM/E-84, and is certified by the NAHB (National Association of Home Builders).



(Over for Model Option Specifications)

Warm Rain® Corp.

P.O. Box 600 Hancock, MI 49930

Phone: (906) 482-3750 Fax: (906) 482-2585 • E-mail: tedk@warmrain.com • Website: www.warmrain.com

Specifications for Models:

WR 3636, WR 3636-A, WR 3636-B, WR 3636-C

WR 3636-A: Models includes Grab Bars:

The grab bars will be factory installed. The grab bars will be 1 1/2" outside diameter ADA compliant stainless steel bars. There are 3 - 24" horizontal grab bars. The wall reinforcement is wood fibreglassed into the unit. 1 - 24" bar will be placed on both the wet wall and the dry wall 34.5" above the floor. 1 - 24" grab bar will be placed on the back wall 34.5" above the floor.

WR 3636-B: Models includes Grab Bars & Fold-up Seat

The grab bars will be factory installed. The grab bars will be 1 1/2" outside diameter ADA compliant stainless steel bars. There are 2 - 24" horizontal grab bars. The wall reinforcement is wood fibreglassed into the unit. 1 - 24" bar will be placed on the wet wall 34.5" above the floor. 1 - 24" grab bar will be placed on the back wall 34.5" above the floor. The ADA compliant fold-up seat will be factory installed. The seat will support a minimum of 250 #'s. The seat will be placed on the side wall opposite the controls 18" above the floor. The seat shall be a white phenolic ADA compliant seat.

WR 3636-C: Models includes Grab Bars, Fold-Up Seat, Pressure Balance Valve, Hand held Shower with Slide Bar, Vacuum Breaker, & Curtain Rod with Hangers

The grab bars will be factory installed. The grab bars will be 1 1/2" outside diameter ADA compliant stainless steel bars. There are 2 - 24 horizontal grab bars. The wall reinforcement is wood fibreglassed into the unit. 1 - 24" bar will be placed on the wet wall 34.5" above the floor. 1 - 24" grab bar will be placed on the back wall 34.5" above the floor. The ADA compliant fold-up seat will be factory installed. The seat will support a minimum of 250 #'s. The seat will be placed on the side wall opposite the controls 18" above the floor. The seat shall be a white phenolic ADA compliant seat. 1 - Symmons Temptrol Valve & Kit model # S-25-300-B30-V-X-2000 will include a Temtrol 2000 pressure balance valve, hand held shower with a 30" bar, and a vacuum breaker. Also, 1 - Seachrome curtain rod with brackets will be included.



Warm Rain® Corp.

P.O. Box 600 Hancock, MI 49930

Phone: (906) 482-3750 Fax: (906) 482-2585 • E-mail: tedk@warmrain.com • Website: www.warmrain.com