

Specification for Model: H-36-MN, H-36-A-MN, H-36-B-MN & H-36-C-MN  
MN Code - Friendly™ Product - NOT ADA COMPLIANT

Warm Rain® model H-36-MN Friendly™ shower fixtures are constructed of reinforced polyester resin covered with a high gloss gel-coat of 18 - 20 mil. thickness. The reinforced fiberglass includes a minimum content of 18 % fiberglass.

The bottom base of the unit is constructed of 1/2" end-grained balsa wood sandwiched between 2 layers of reinforced fiberglass at a content of no less than 18%. The base is an integral part of the unit.

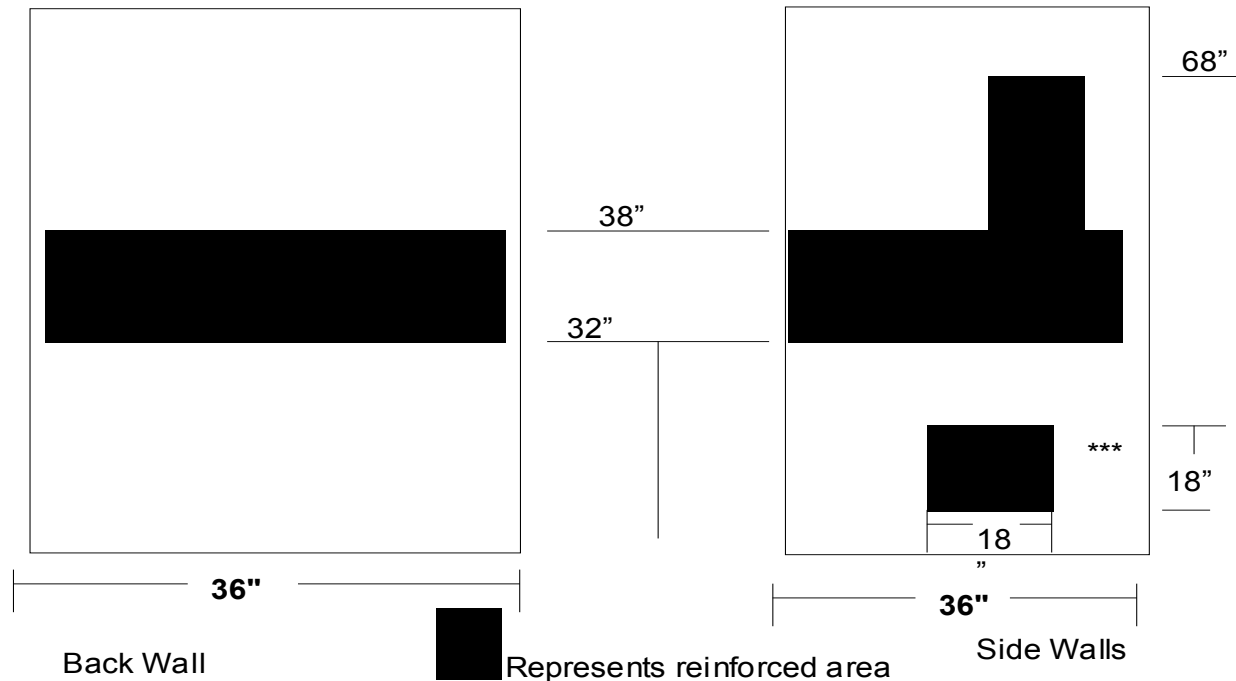
The unit will measure 36" x 36" x 79.5" and has a 5" dam and a textured bottom floor

The texture floor meets and exceeds ASTM Safety Specification F-462.

These units are reinforced for the future installation of grab bars. The reinforcement is shown in the diagram below. This includes reinforcement for the vertical grab bar in accordance with the **MN Building code**. See page 2 for options including grab bars & fold-up seat.

Antibacterial additive is an option for this unit.

These Warm Rain® Friendly™ showers arrive on site fully tested, inspected, and certified to meet or exceed the precise standards established by FHA/HUD, materials bulletin 73, American National Standards Z-124.1 and Z-124.2, ASTM/E-84 and is certified by the National Association of Home Builders (NAHB). These Friendly™ units comply with the Fair Housing Act and the MN building code for adaptability.



\*\*\*Reinforcement for fold-up seat is only on B & C Packages\*\*\*

Warm Rain® Corporation, P.O. Box 600, Hancock, MI 49930  
Voice: 906-482-3750 Fax: 906-482-2585 E-mail: [tedk@warmrain.com](mailto:tedk@warmrain.com) Website: [www.warmrain.com](http://www.warmrain.com)

Specification for Model: H-36-MN, H-36-A-MN, H-36-B-MN & H-36-C-MN  
MN Code - Friendly™ Product - NOT ADA COMPLIANT

**H-36-MN-A: Model includes Grab Bars**

The grab bars will be factory installed. The grab bars will be 1 1/2" outside diameter ADA compliant stainless steel bars. There are 2 - 18" & 1 - 12" horizontal grab bars and 1 - 24" vertical grab bar. The wall reinforcement is wood fiberglassed into the unit. 1 - 18" bar will be placed on both the wet wall and the dry wall 34.5" above the floor. 1 - 12" grab bar will be placed on the back wall 34.5" above the floor. 1 - 24" vertical grab bar will be placed 4" above the horizontal bar half way between the front of the unit and the middle of the wet wall.

**H-36-MN-B: Model includes Grab Bars & a Fold-up seat**

The grab bars will be factory installed. The grab bars will be 1 1/2" outside diameter ADA compliant stainless steel bars. There are 1 - 18" & 1 - 12" horizontal grab bars & 1 - 24" vertical grab bar. The wall reinforcement is wood fiberglassed into the unit. 1 - 18" bar will be placed on the wet wall 34.5" above the floor. 1 - 12" grab bar will be placed on the back wall 34.5" above the floor. 1 - 24" vertical grab bar will be placed 4" above the horizontal bar half way between the front of the unit and the middle of the wet wall. The ADA compliant fold-up seat will be factory installed. The seat will support a minimum of 250 #'s. The seat will be placed on the side wall opposite the controls 18" above the floor. The seat shall be a phenolic white ADA compliant seat.

**H-36-MN-C: Model includes Grab Bars, Fold-up seat, Pressure Balance Valve, Hand held shower with slide bar, Vacuum Breaker, & Curtain rod with brackets**

The grab bars will be factory installed. The grab bars will be 1 1/2" outside diameter ADA compliant stainless steel bars. There are 1 - 18" & 1 - 12" horizontal grab bars and 1 - 24" vertical grab bar. The wall reinforcement is wood fiberglassed into the unit. 1 - 18" bar will be placed on the wet wall 34.5" above the floor. 1 - 12" grab bar will be placed on the back wall 34.5" above the floor. 1 - 24" vertical grab bar will be placed 4" above the horizontal bar half way between the front of the unit and the middle of the wet wall. The ADA compliant fold-up seat will be factory installed. The seat will support a minimum of 250 #'s. The seat will be placed on the side wall opposite the controls 18" above the floor. The seat shall be a phenolic white ADA compliant seat.

1 - Symmons Temptrol Valve & Kit model # S-25-300-B30-V-X-2000 will include a Temtrol 2000 pressure balance valve, hand held shower with a 30" bar, and a vacuum breaker. Also, 1 - Seachrome curtain rod with brackets will be included.



Warm Rain® Corporation, P.O. Box 600, Hancock, MI 49930  
Voice: 906-482-3750 Fax: 906-482-2585 E-mail: [tedk@warmrain.com](mailto:tedk@warmrain.com) Website: [www.warmrain.com](http://www.warmrain.com)