

Specification for Models: FW-48-MN, FW-48-A-MN, FW-48-B-MN & FW-48-C-MN
Friendly® Product – Not ADA Compliant

Warm Rain® model FW-48 Friendly® shower fixture is constructed of reinforced polyester resin covered with a high gloss gel-coat of 18 - 20 mils. thickness. The reinforced fiberglass has a minimum content of 18 % fiberglass.

The base is an integral part of the unit.

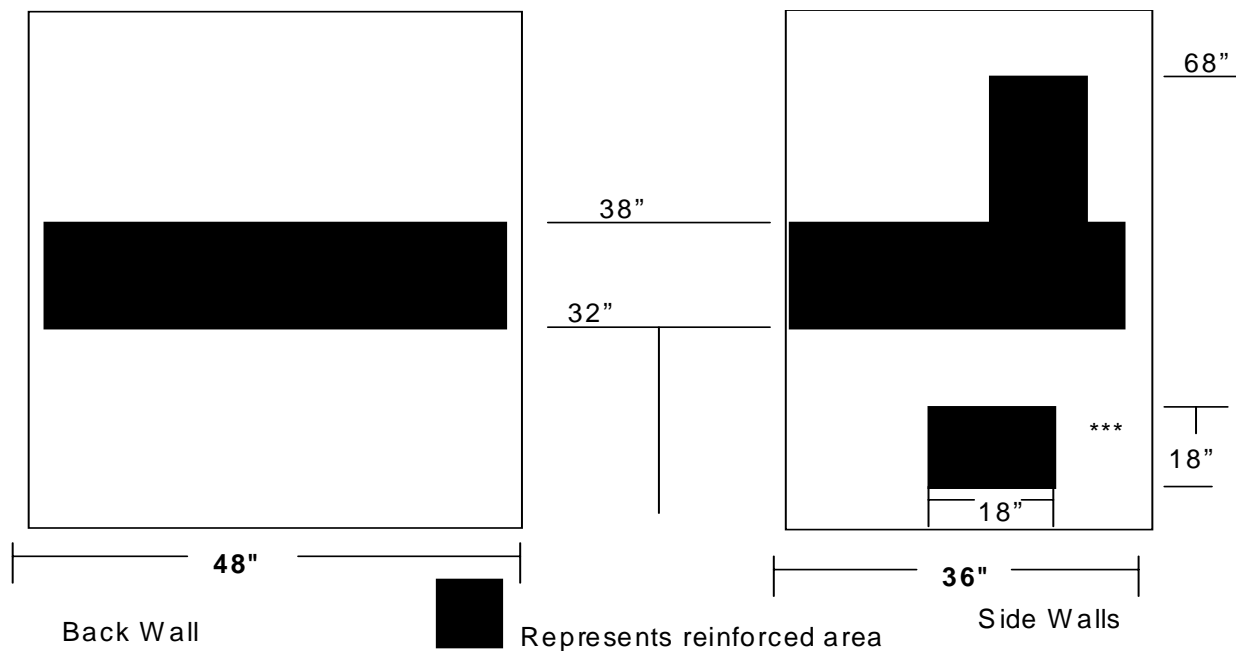
The unit will measure 48" x 36" x 79" and has a textured bottom floor.

The Front Outside threshold is 3/4" of an inch

These units have flat walls and are reinforced for the future installation of grab bars. The reinforcement is shown in the diagram below. See page 2 for options including grab bars & fold-up seat.

Antibacterial additive is an option for this unit.

These Warm Rain® assisted showers arrive on site fully tested, inspected, and certified to meet or exceed the precise standards established by FHA/HUD, materials bulletin 73, American National Standards Z-124.1 and Z-124.2, ASTM/E-84 and is certified by the National Association of Home Builders NAHB). These Adaptable units comply with the Fair Housing Act for Adaptability.



Reinforcement for fold-up seat is only on B & C Packages

Warm Rain® Corporation, P.O. Box 600, Hancock, MI 49930
Voice: 906-482-3750 Fax: 906-482-2585 E-mail: tedk@warmrain.com
Website: www.warmrain.com

FW-48-A-MN: Model includes Grab Bars

The grab bars will be factory installed. The grab bars will be 1 1/2” outside diameter ADA compliant stainless steel bars. There are 2 - 24” & 1 - 36” horizontal grab bars and 1 – 24” vertical grab bar. The wall reinforcement is wood fiberglassed into the unit. 1 - 24” bar will be placed on both the wet wall and the dry wall 34.5” above the floor. 1 - 36” grab bar will be placed on the back wall 34.5” above the floor. 1 - 24” vertical grab bar will be placed 4” above the horizontal bar half way between the front of the unit and the middle of the wet wall.

FW-48-B-MN: Model includes Grab Bars & a Fold-up seat

The grab bars will be factory installed. The grab bars will be 1 1/2” outside diameter ADA compliant stainless steel bars. There are 2 – 24” horizontal grab bars and 1 – 24” vertical grab bar. The wall reinforcement is wood fiberglassed into the unit. 1 - 24” bar will be placed on the wet wall 34.5” above the floor. 1 - 24” grab bar will be placed on the back wall 34.5” above the floor. 1 - 24” vertical grab bar will be placed 4” above the horizontal bar half way between the front of the unit and the middle of the wet wall. The ADA compliant fold-up seat will be factory installed. The seat will support a minimum of 250 #’s. The seat will be placed on the side wall opposite the controls 18” above the floor. The seat shall be a phenolic white ADA compliant seat.

FW-48-C-MN: Model includes Grab Bars, Fold-up seat, Pressure Balance Valve, Hand held shower with slide bar, Vacuum Breaker, & Curtain rod with brackets

The grab bars will be factory installed. The grab bars will be 1 1/2” outside diameter ADA compliant stainless steel bars. There are 2 - 24” horizontal grab bars and 1 – 24” vertical grab bar. The wall reinforcement is wood fiberglassed into the unit. 1 - 24” bar will be placed on the wet wall 34.5” above the floor. 1 - 24” grab bar will be placed on the back wall 34.5” above the floor. 1 - 24” vertical grab bar will be placed 4” above the horizontal bar half way between the front of the unit and the middle of the wet wall. The ADA compliant fold-up seat will be factory installed. The seat will support a minimum of 250 #’s. The seat will be placed on the side wall opposite the controls 18” above the floor. The seat shall be a phenolic white ADA compliant seat. 1 - Symmons Temptrol Valve & Kit model # S-25-300-B30-V-X-2000 will include a Temtrol 2000 pressure balance valve, hand held shower with a 30” bar, and a vacuum breaker. Also, 1 - Seachrome curtain rod with brackets will be included.



Warm Rain® Corporation, P.O. Box 600, Hancock, MI 49930
Voice: 906-482-3750 Fax: 906-482-2585 E-mail: tedk@warmrain.com
Website: www.warmrain.com